

Healthy Neighborhoods Sustainability Development Workshop “Sustaining Healthy Communities: A Proposed Model”

Tuesday, June 12, 2018 1:30 PM to 3:30 PM
Dover Downs Hotel & Casino; Ballroom C, 1131 North DuPont Hwy, Dover, DE

Meeting Minutes

Upcoming public meetings

- Thursday, June 21, 2018 - Healthy Neighborhoods Statewide Consortium
- Thursday, August 2, 2018 - Health Care Commission (HCC) monthly meeting
 - There will not be a meeting for July 2018.

Check the State of Delaware public meetings calendar for additional details <https://publicmeetings.delaware.gov/>

Welcome Address

Ann Kempfski provided a warm welcome to the PM session attendees and introduced Co-Ambassador Dr. Karyl Rattay, MD, MS, Director, Division of Public Health (DPH).

Dr. Rattay presented ‘Social Determinants of Health and why they Matter’ by providing public health statistics as it pertains to population health and the overall health of Delaware and social determinants.

Dr. Rattay introduced Co-Ambassador Dr. Steven Peuquet, PhD, Associate Professor and Director, Center for Community Research & Service (CCRS).

Proceedings

Community Initiatives to Address Social Determinants and Proposed Sustainability Model

Steven Peuquet introduced the proposed model to be used to help sustain Healthy Communities Delaware.

Major areas of the Proposed Sustainability Model: Healthy Communities Delaware (HCD):

- Left side of proposed model
 - The **Community Investment Council** (CIC) emanated from the University of Delaware’s investment council that started forming while Healthy Neighborhoods stakeholders were meeting/planning
 - CIC investors can contribute funding, have an equity position, loan capital, and grant monies. Previous experience in DE with Housing Capacity Building Program -- built non-profit housing orgs
 - The **Guidance Committee** is referred to as “brain trust” neutral evaluative resource to ensure strategic and methodological disbursements are carried out.
 - **Backbone organizations** (BBO) provide managing oversight and logistical support for all components/functions.

- Right-hand side of proposed model includes: individual stakeholders and community based organization's (CBO) within task Forces and/or partnership entities. These units can operate independently and/or in conjunction with a local council or a new partnership. Also allows flexibility for new and additional entities.
 - There could be community representation on Guidance Committee.
 - Community project proposals would work with BBO infrastructure support to get funding from CIC.

Panel: Question and Answer

Panelists:

- Brian Rahmer, PhD, MS, VP Health and Housing, Enterprise Community Partners, Inc.
- Ann Kempster, MA, Executive Director, Delaware Health Care Commission (DHCC)
- Dr. Steven Peuquet, PhD, Associate Professor and Director, Center for Community Research & Service (CCRS), University of Delaware
- Dr. Karyl Rattay, MD, MS, Director, Division of Public Health (DPH), Department of Health and Social Services (DHSS)

Panel moderator, Liddy Garcia-Brunel posed questions to Panelists that were asked by workshop attendees on notecards. Questions ranged from what entity will be the Backbone Organization to how the BBO will be selected to what the plan is for inclusion of historically left out communities that have particularly poor health outcomes.

Exercise: Feedback on Proposed Sustainability Model

Enlarged versions of the HCD proposed model were situated at each table. Participants were given sticky notes and green dots to indicate areas of concern and opportunity for discussion.

- Lead Facilitators:
 - Gina Crist, Community Health Specialist, University of Delaware – Cooperative Extension;
 - Roger Hesketh, Director of Community Revitalization, University of Delaware Center for Community Research & Services

Gina and Roger gave instructions to attendees on how to provide input on the proposed model as a table. Facilitators designated a scribe to notate the lead points to discuss with the larger group.

Areas of opportunity to expound included characteristics regarding:

- Community engagement
- Task force/partnership (included on right-hand side of model)
- BBO/CIC functions

Areas of concern and improvement included:

- CIC – funding will change with economy
- Meaningful community engagement is difficult – one size does not fit all
- Communication strategy needed to inform stakeholders and community members

Wrap-Up and Closing Remarks

Steve Peuquet walked through next steps pertaining to implementation of the proposed Healthy Communities Delaware model. He expressed the need to tap multiple sectors to make the Healthy Communities Delaware operate properly. Continuous feedback is appreciated so that the components of the model makes sense and so that it can be continued to be refined. Steve eluded to a state-wide symposium focused on progress to date, alignment, etc.

Will take the next few month garnering feedback necessary to develop CIC and implement a viable BBO structure.

More opportunities for engagement will be schedules before the end of the State Innovation Model (SIM) grant expires.

Staff in attendance

Ambassadors

- Dr. Steven Peuquet, PhD, Associate Professor and Director, Center for Community Research & Service (CCRS), University of Delaware
- Dr. Karyl Rattay, MD, MS, Director, Division of Public Health (DPH), Department of Health and Social Services (DHSS)

Additional Staff Facilitator(s):

- University of Delaware
 - Mimi Rayl, Graduate Research Assistant, University of Delaware Center for Community Research & Service;
 - Gina Crist, Community Health Specialist, University of Delaware – Cooperative Extension;
 - Roger Hesketh, Director of Community Revitalization, University of Delaware Center for Community Research & Services
- Health Management Associates (HMA)
 - Liddy Garcia-Bunuel, Principal
 - Lori Weiselberg, Principal
 - Sarina Coates, Research Assistant
- Delaware Health Care Commission (DHCC)
 - Keanna Faison, Director of Planning and Policy
 - Eschalla Clarke, Senior Social Services Administrator
 - Stephanie Killen, Fiscal Administrative Officer
 - La Ronda Moore, Executive Program Assistant
 - Marques Johnson, Administrative Specialist III
 - Latoya Wright, Management Analyst III
 - Kiara Cole, Community Relations Officer

Thank You!

Healthy Communities Delaware



Sustaining Healthy Communities: A Proposed Model

Tuesday, June 12, 2018, 1:30 to 3:30 pm

Dover Downs Hotel and Conference Center - Ballroom C

1131 N. DuPont Blvd, Dover, DE 19901



ChooseHealth
DELAWARE

Agenda

- 1:00 PM **Check-In**
- 1:30 PM **Welcome and
Community Health in Delaware: The Rationale and Highlights of the Journey**

Ann Kempster, Executive Director for Delaware Health Care Commission
Dr. Karyl Rattay, MD, MS, Director, Division of Public Health, DHSS
- 1:40 PM **Proposed Sustainability Model: Healthy Communities Delaware**

Dr. Karyl Rattay, MD, MS, Director, Division of Public Health, DHSS
Dr. Steven Peuquet, PhD, Director, UD Center for Community Research and Service
- 2:00 PM **Question and Answer Session to Clarify Proposed Model**
- 2:30 PM **Table Exercise and Identification of Issues Related to Model**
- 3:00 PM **Large Group Discussion on Proposed Model**
- 3:25 PM **Wrap Up**
- 3:30 PM **Adjourn**



The health of a community is an almost unfailing index of its morals.

- James Martineau, 19th c.



ChooseHealth
DELAWARE

Delaware's Road to Value

Support **patient-centered, coordinated care**.
Prepare the health provider **workforce and infrastructure**.

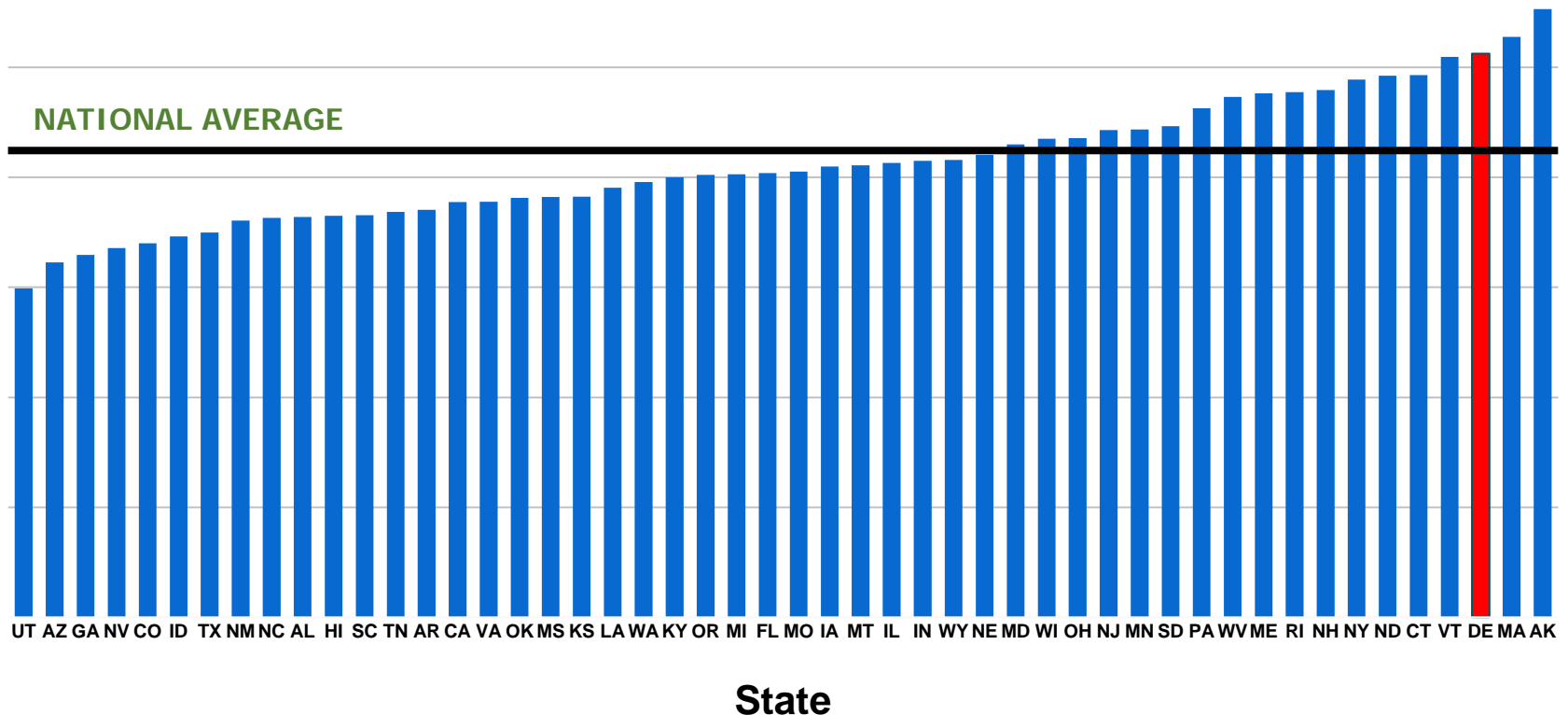
Improve health for **special populations**.
Engage **communities**.

Ensure **data-driven** performance.



DE Spends More on Health Care Than Most Other States

PER CAPITA PERSONAL HEALTH CARE EXPENDITURES, 2014



NOTE: District of Columbia is not included.

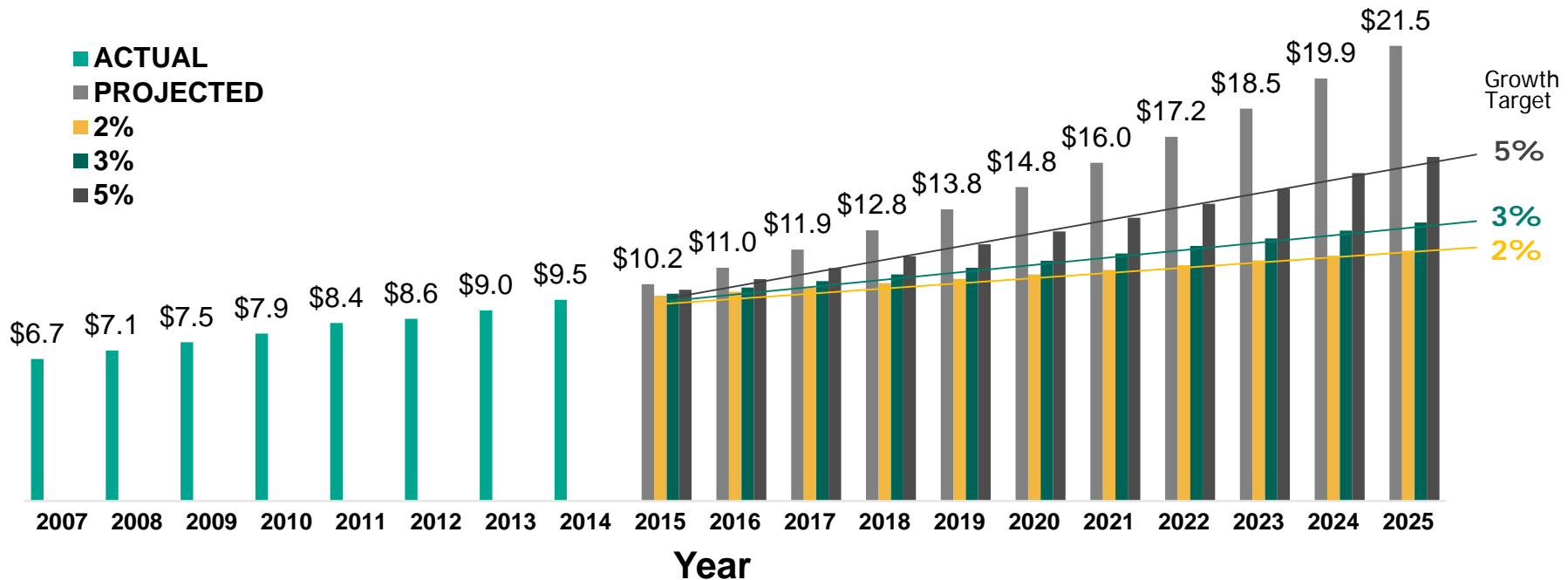
SOURCE: Centers for Medicare & Medicaid Services, [Health Expenditures by State of Residence](#), CMS, 2017.

#ourhealthDE



Delaware's Total Health Spending Will Double from 2015-2025

DELAWARE'S ACTUAL AND PROJECTED PERSONAL HEALTH CARE EXPENDITURES, 2007—2025
(BILLIONS OF DOLLARS)



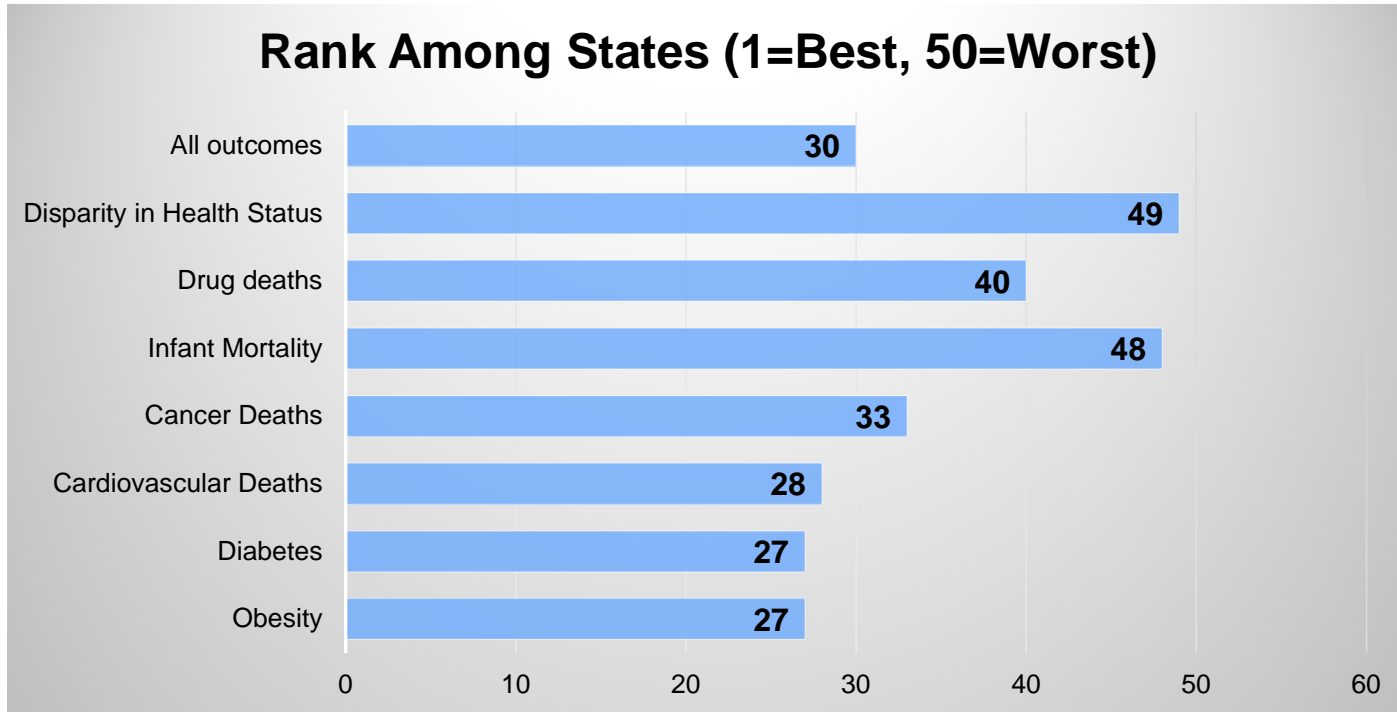
SOURCE: Centers for Medicare & Medicaid Services, [Health Expenditures by State of Residence](#), CMS, 2017

#ourhealthDE



DELAWARE: AN UNHEALTHY STATE

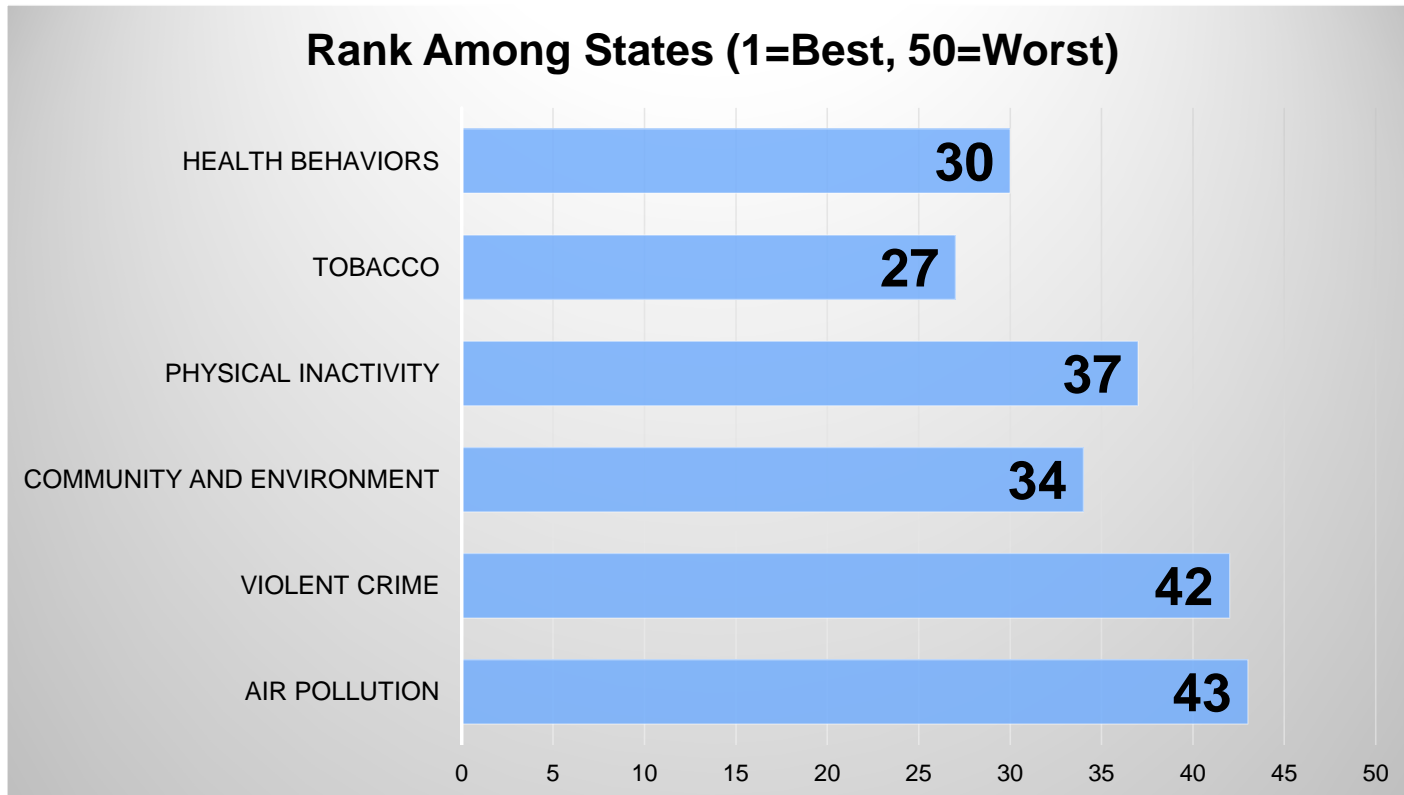
Health Outcomes



Source: America's Health Rankings, 2015

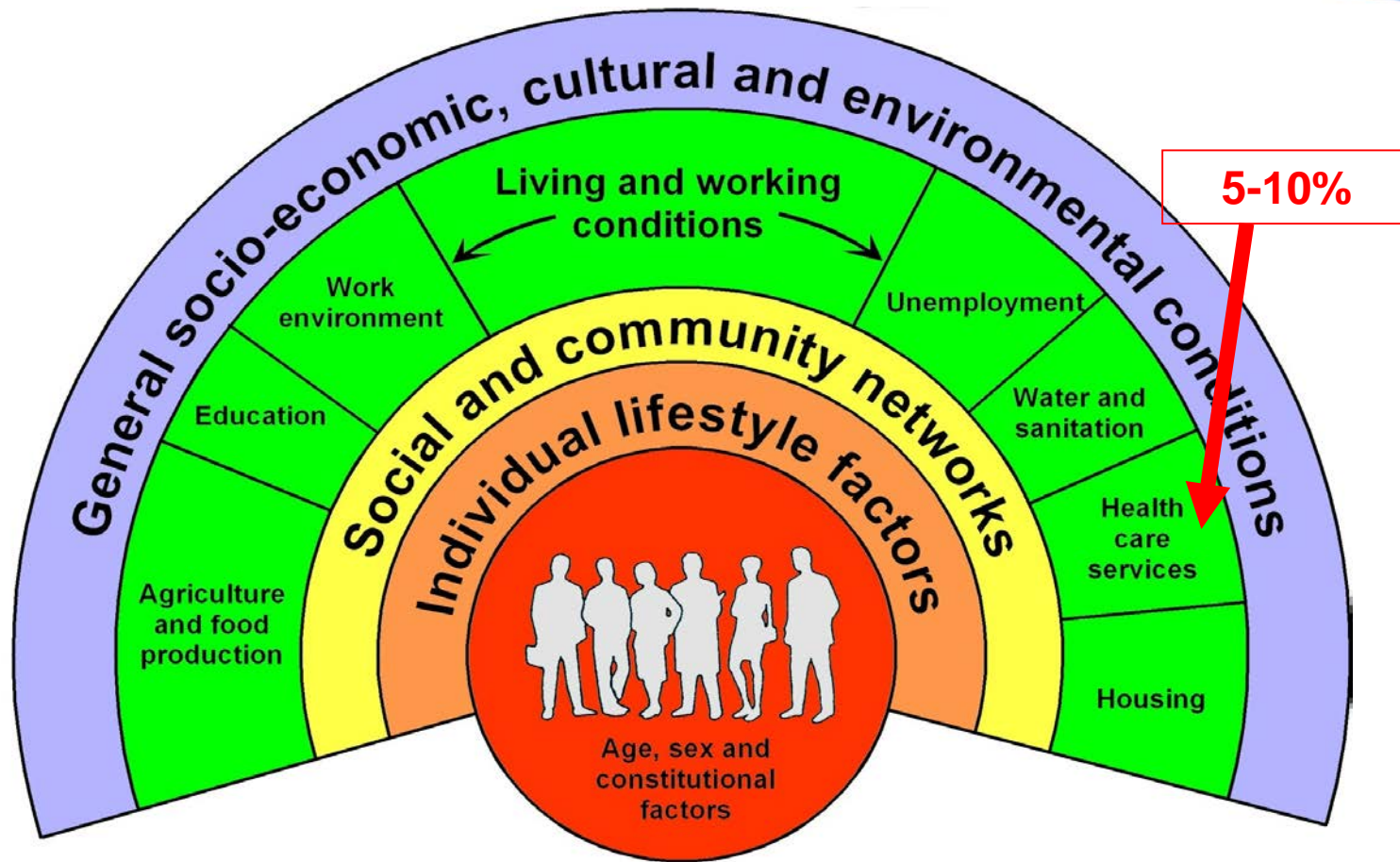
DELAWARE: AN UNHEALTHY STATE

Behaviors and Other Determinants of Health



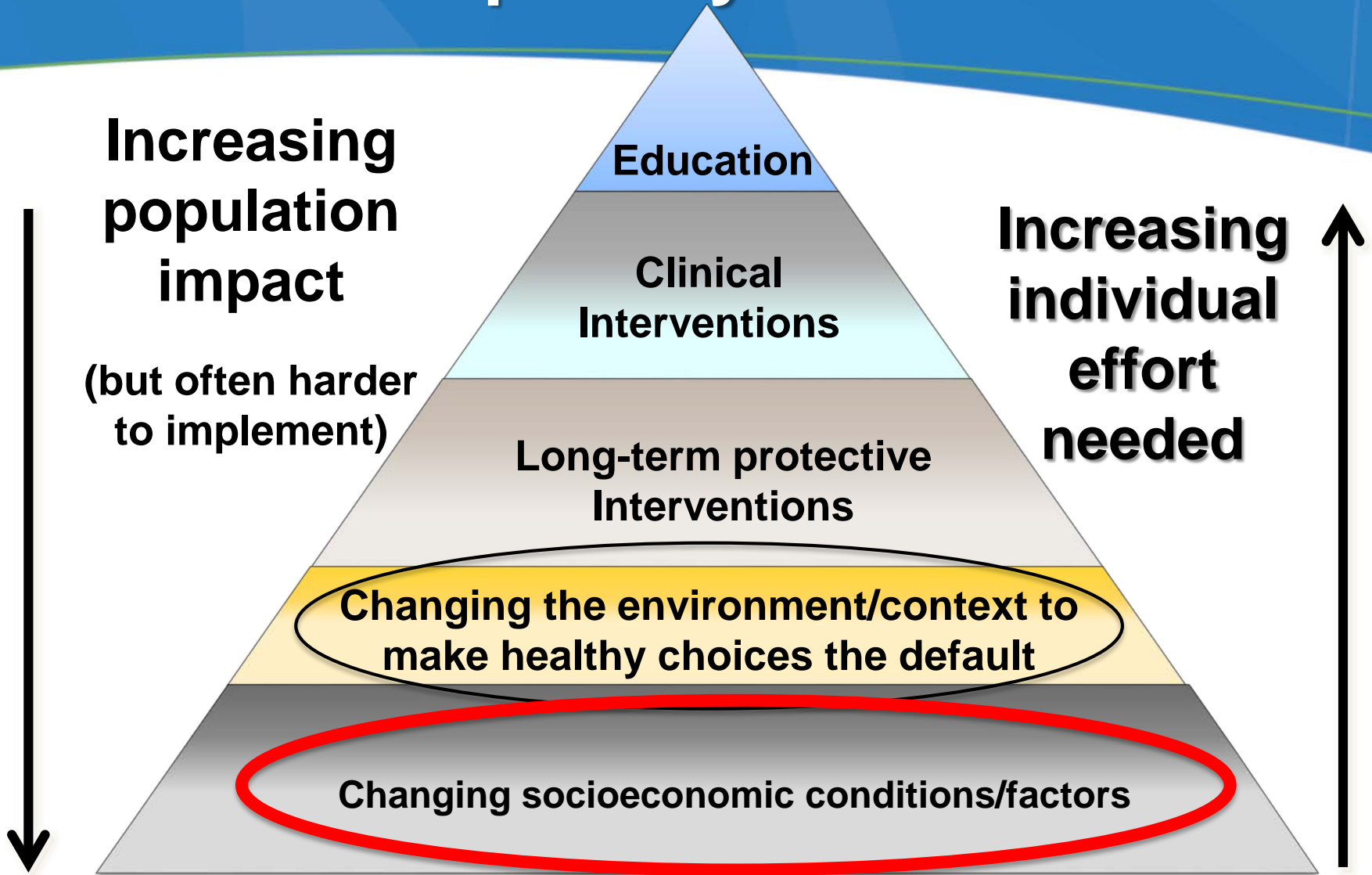
Source: America's Health Rankings, 2015

DETERMINANTS OF HEALTH

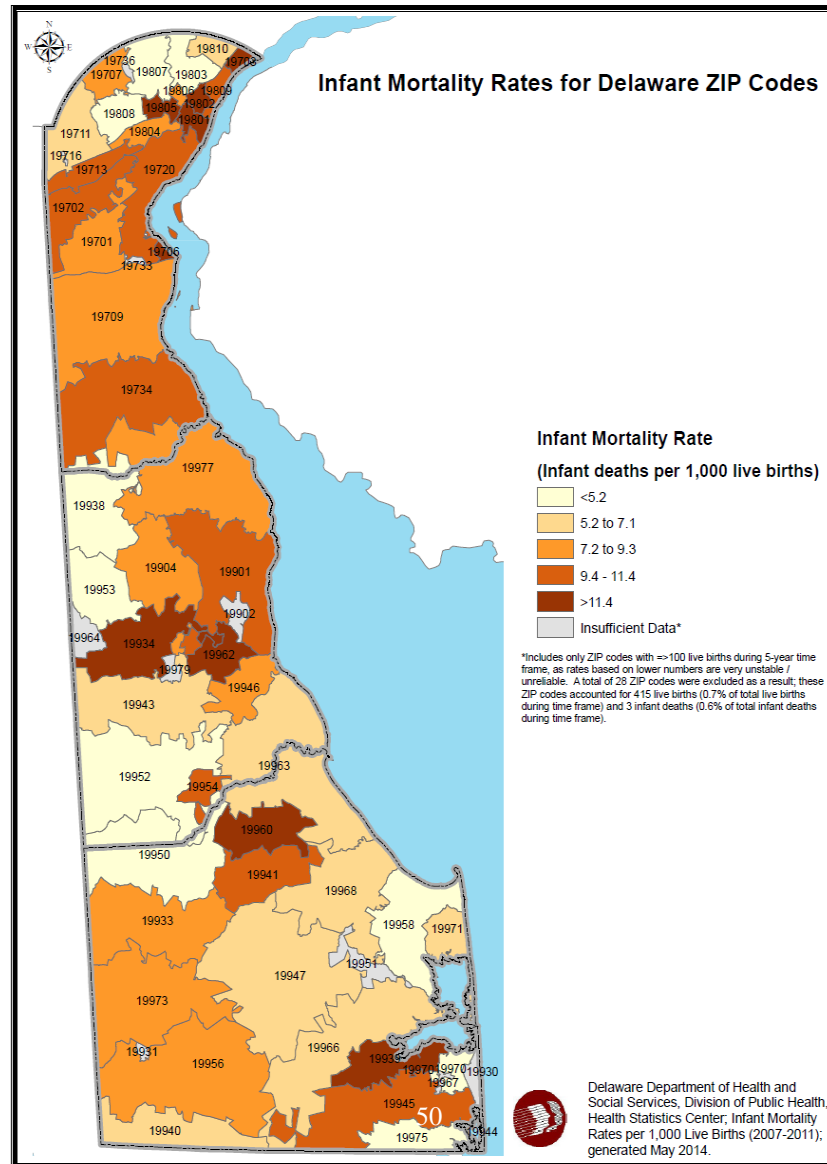


Source: Dahlgren and Whitehead, 1991

“Impact Pyramid”



Delaware Infant Mortality Rates By Zip Code



health happens **here**

health
happens
here 

Healthy Neighborhoods

- Population health discussions began in earnest 7 years ago when Delaware applied for a CMMI SIM Planning Grant.
- The Healthy Neighborhoods Committee developed plans for implementation and began to support local implementation in each county over the past 2 years.
- Support has been provided for local coalition infrastructure and more recently for implementation of strategic initiatives.
- Subcommittees were also created to focus on community health workers and the creation of a sustainable funding model.

Building on Past Efforts

Over the last two years, the *Sustainability Subcommittee* of the *Healthy Communities Committee* worked to . . .

- identify an organizational model that would be capable of supporting local planning activities,
- and provide sources of funding for worthwhile projects and program that emanate from these planning efforts.

Building on Past Efforts

As the *Sustainability Subcommittee* was doing its work . . .

. . . a task force convened by the University of Delaware and Federal Home Loan Bank of Pittsburgh under the *Blueprint Communities Delaware* program was meeting periodically to explore the formation of a “*community investment council*” in the state.

Building on Past Efforts

The good thinking and work of the *Sustainability Committee* and the *Blueprint Communities Taskforce* is now being used by a *Development Team* to create the model we are here to discuss today, a model that will support . . .

- local planning and investment in community projects and programs . . .
- that can improve the health and wellbeing of people in the neighborhoods and communities where they live.

Building on Past Efforts

The *Development Team* consists of people from the following organizations:

- Delaware Health Care Commission
- Division of Public Health
- Health Management Associates
- University of Delaware, through the Center for Community Research & Service, Cooperative Extension, and Institute for Public Administration
- Several local Delaware experts in the health and community development fields

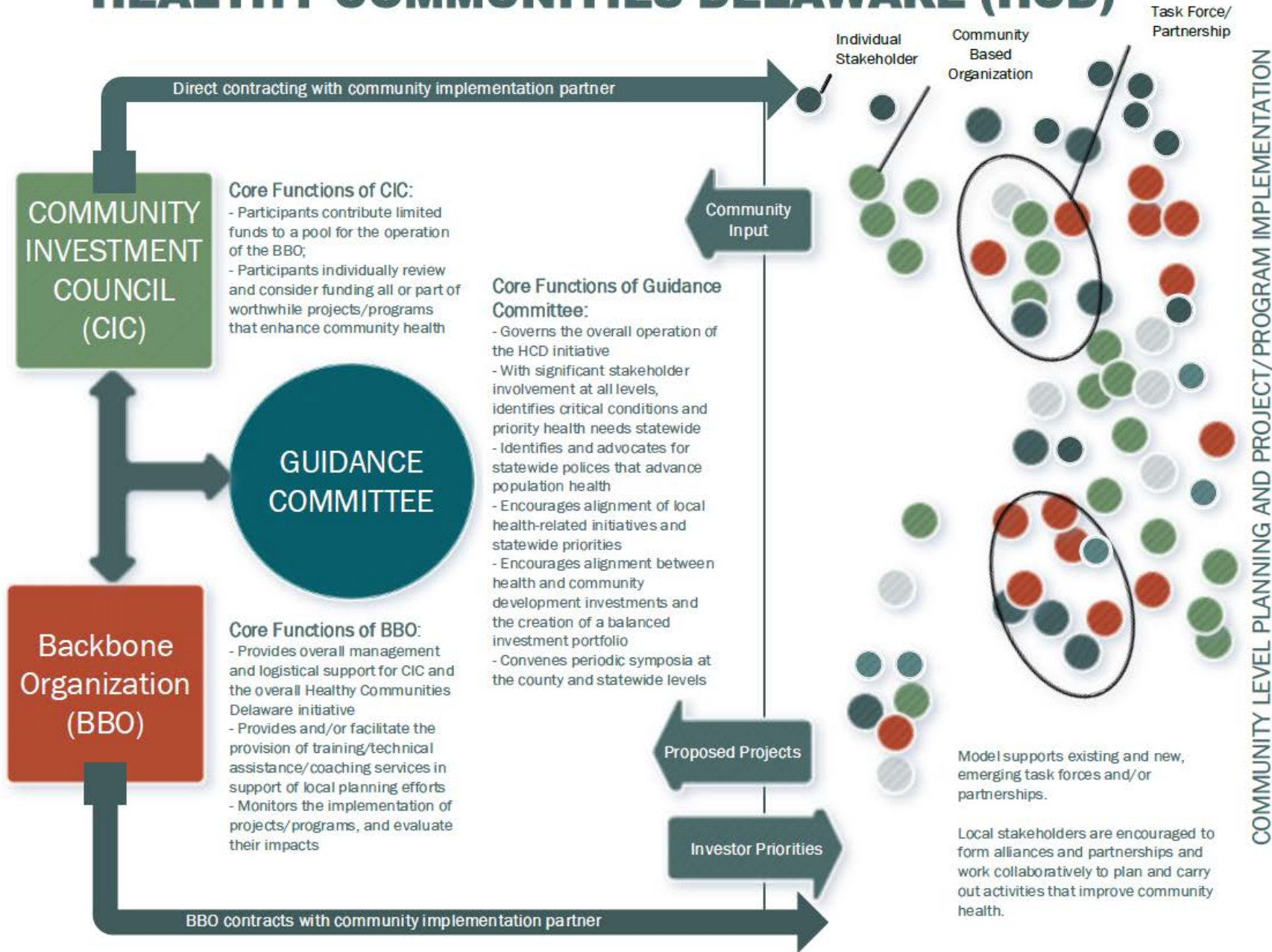
Building on Past Efforts

In developing this model, the goals have been to . . .

- build on the good work that's been done in Delaware up to the present . . .
- and to create a more coordinated system of local planning, investment and development that can truly address the different social determinants of health on a sustainable basis.

HEALTHY COMMUNITIES DELAWARE (HCD)

STATE INFRASTRUCTURE





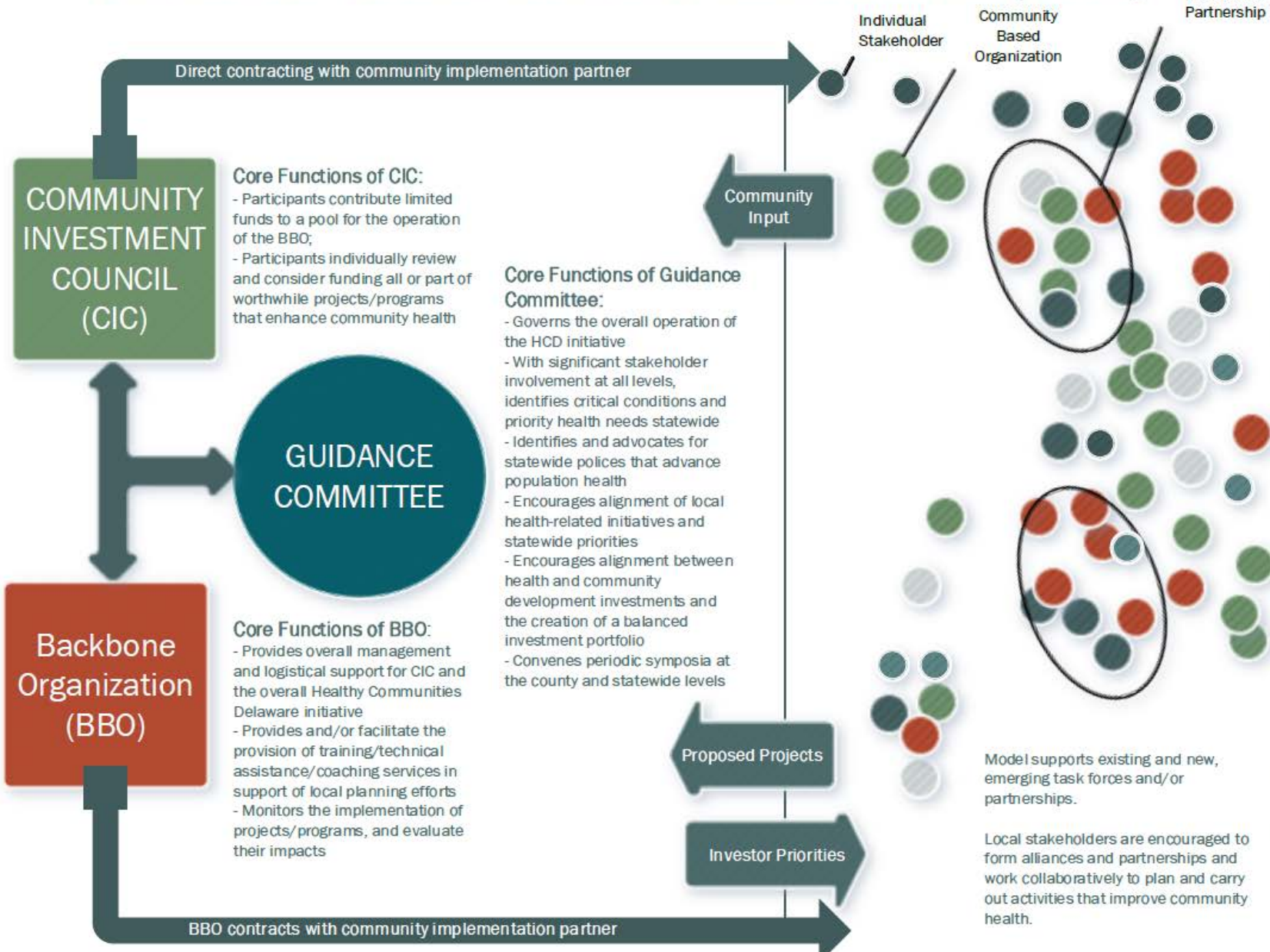
GUIDANCE COMMITTEE

Core Functions of Guidance Committee:

- Governs the overall operation of the HCD initiative
- With significant stakeholder involvement at all levels, identifies critical conditions and priority health needs statewide
- Identifies and advocates for statewide policies that advance population health
- Encourages alignment of local health-related initiatives and statewide priorities
- Encourages alignment between health and community development investments and the creation of a balanced investment portfolio
- Convenes periodic symposia at the county and statewide levels

HEALTHY COMMUNITIES DELAWARE (HCD)

STATE INFRASTRUCTURE



COMMUNITY INVESTMENT COUNCIL (CIC)

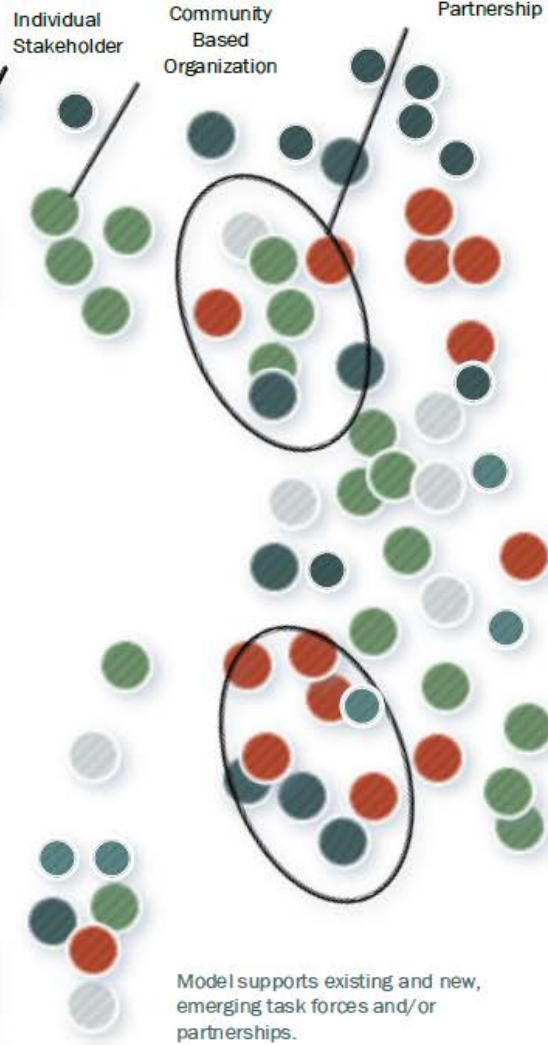
- Core Functions of CIC:**
- Participants contribute limited funds to a pool for the operation of the BBO;
 - Participants individually review and consider funding all or part of worthwhile projects/programs that enhance community health

GUIDANCE COMMITTEE

- Core Functions of Guidance Committee:**
- Governs the overall operation of the HCD initiative
 - With significant stakeholder involvement at all levels, identifies critical conditions and priority health needs statewide
 - Identifies and advocates for statewide policies that advance population health
 - Encourages alignment of local health-related initiatives and statewide priorities
 - Encourages alignment between health and community development investments and the creation of a balanced investment portfolio
 - Convenes periodic symposia at the county and statewide levels

Backbone Organization (BBO)

- Core Functions of BBO:**
- Provides overall management and logistical support for CIC and the overall Healthy Communities Delaware initiative
 - Provides and/or facilitate the provision of training/technical assistance/coaching services in support of local planning efforts
 - Monitors the implementation of projects/programs, and evaluate their impacts



COMMUNITY LEVEL PLANNING AND PROJECT/PROGRAM IMPLEMENTATION

Direct contracting with community implementation partner

BBO contracts with community implementation partner

Direct contracting with community imple

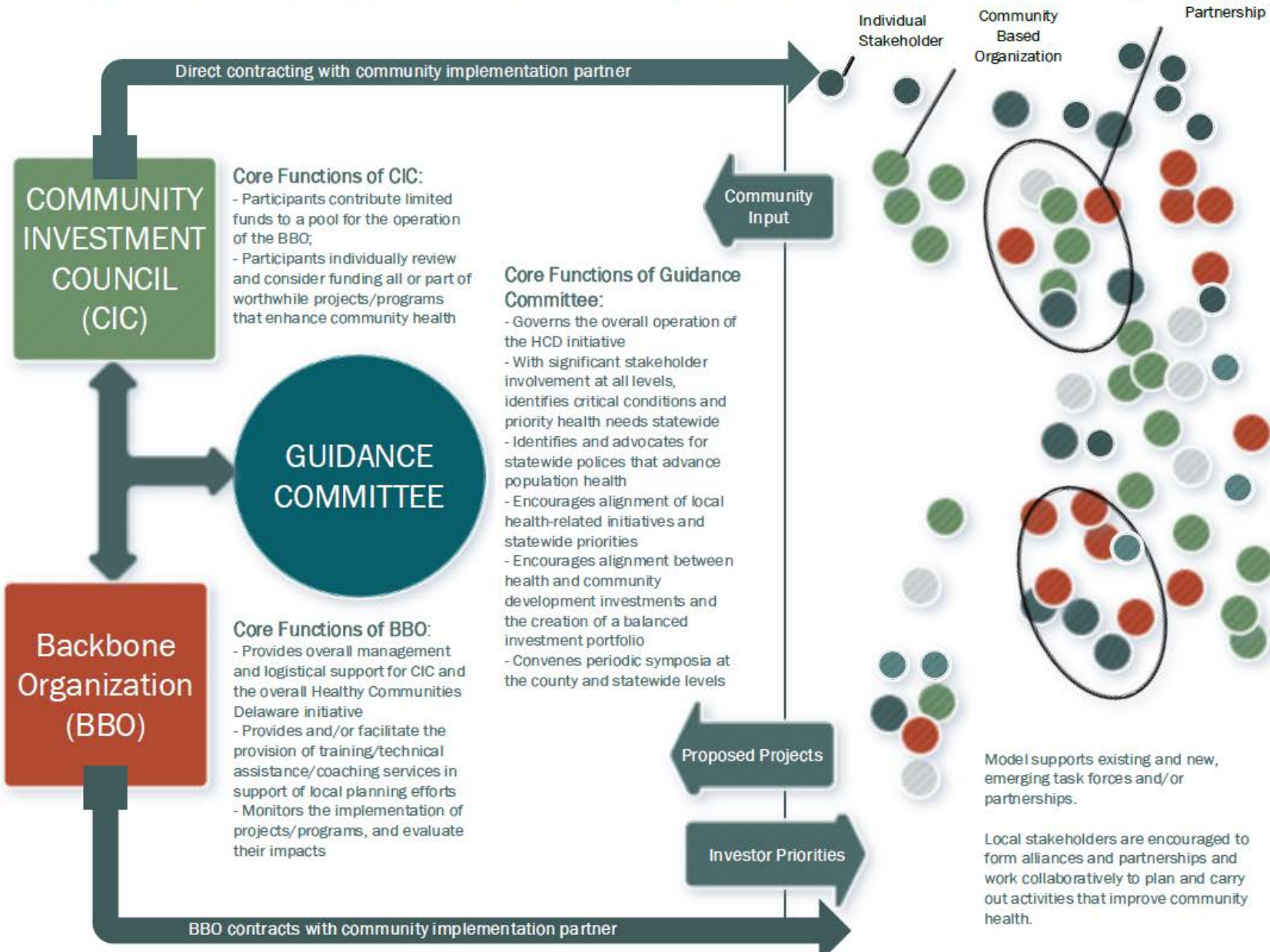
COMMUNITY INVESTMENT COUNCIL (CIC)

Core Functions of CIC:

- Participants contribute limited funds to a pool for the operation of the BBO;
- Participants individually review and consider funding all or part of worthwhile projects/programs that enhance community health

HEALTHY COMMUNITIES DELAWARE (HCD)

STATE INFRASTRUCTURE



COMMUNITY INVESTMENT COUNCIL (CIC)

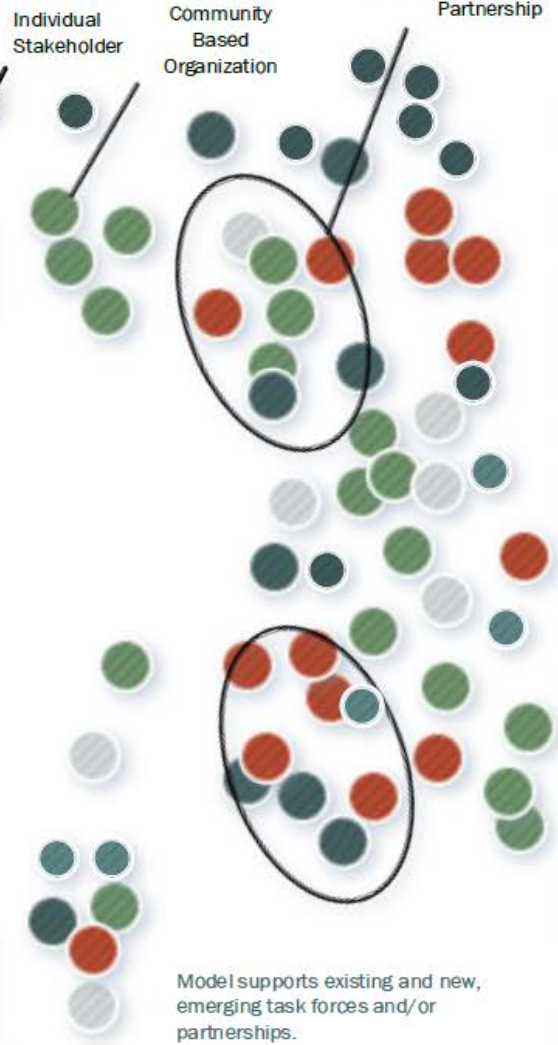
- Core Functions of CIC:**
- Participants contribute limited funds to a pool for the operation of the BBO;
 - Participants individually review and consider funding all or part of worthwhile projects/programs that enhance community health

GUIDANCE COMMITTEE

- Core Functions of Guidance Committee:**
- Governs the overall operation of the HCD initiative
 - With significant stakeholder involvement at all levels, identifies critical conditions and priority health needs statewide
 - Identifies and advocates for statewide policies that advance population health
 - Encourages alignment of local health-related initiatives and statewide priorities
 - Encourages alignment between health and community development investments and the creation of a balanced investment portfolio
 - Convenes periodic symposia at the county and statewide levels

Backbone Organization (BBO)

- Core Functions of BBO:**
- Provides overall management and logistical support for CIC and the overall Healthy Communities Delaware initiative
 - Provides and/or facilitate the provision of training/technical assistance/coaching services in support of local planning efforts
 - Monitors the implementation of projects/programs, and evaluate their impacts



Model supports existing and new, emerging task forces and/or partnerships.

Local stakeholders are encouraged to form alliances and partnerships and work collaboratively to plan and carry out activities that improve community health.

COMMUNITY LEVEL PLANNING AND PROJECT/PROGRAM IMPLEMENTATION

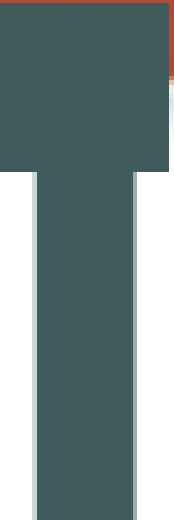
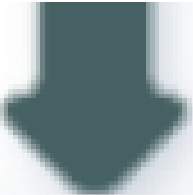
Direct contracting with community implementation partner

BBO contracts with community implementation partner

Community Input

Proposed Projects

Investor Priorities



Backbone Organization (BBO)

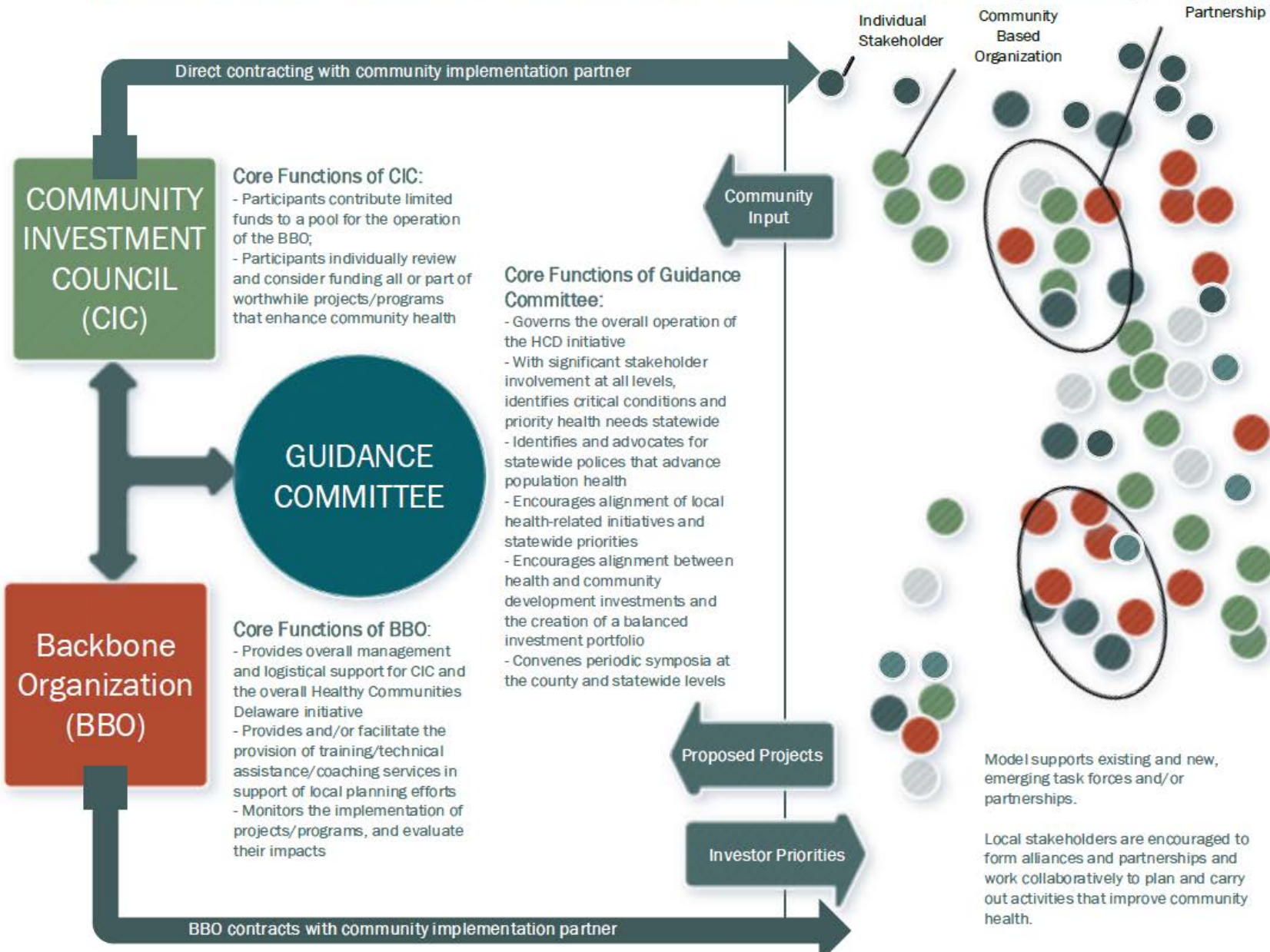


Core Functions of BBO:

- Provides overall management and logistical support for CIC and the overall Healthy Communities Delaware initiative
- Provides and/or facilitate the provision of training/technical assistance/coaching services in support of local planning efforts
- Monitors the implementation of projects/programs, and evaluate their impacts

HEALTHY COMMUNITIES DELAWARE (HCD)

STATE INFRASTRUCTURE



COMMUNITY LEVEL PLANNING AND PROJECT/PROGRAM IMPLEMENTATION

Model supports existing and new, emerging task forces and/or partnerships.

Local stakeholders are encouraged to form alliances and partnerships and work collaboratively to plan and carry out activities that improve community health.

Instructions for this Afternoon's Exercise

1. Identify two areas of the model you think will work well. Place green stickers on those areas.
2. Identify up to two areas of the model where you see an "issue" – this could be an opportunity, a concern, etc. For each issue, describe it on a post-it and provide constructive comments about that issue on the same post-it.
3. Place the post-its with your issue/constructive comments on the relevant part of the model. For example, if you see an issue with the "guidance committee," place your post-it on the guidance committee section of the model.
4. With time remaining, quickly go around the table to share what you wrote.
5. Identify a recorder to summarize the table discussion using the "table discussion notes" handout on the table.
6. What key issues would your table like to discuss with the larger group? The recorder should indicate these at the bottom of the handout.

Next Steps

1. The feedback provided by everyone today will be used to fine-tune the model.
2. Additional public and stakeholder meetings will be held over the next few months to report on progress and to obtain additional input.
3. By mid-fall 2018, the three major components of the *Healthy Communities Delaware* system will have been established.
4. The first meeting of the Community Investment Council will happen as soon as possible thereafter, and initial investment decisions will be made to support worthwhile community projects and programs.
5. A state-wide symposium will be held in early 2019 that brings together all stakeholders to discuss progress to date and to plan for the next 12-18 months.

“The power of community to create health is far greater than any physician, clinic, or hospital.”

- Dr. Mark Hyman



ChooseHealth
DELAWARE

Thanks for attending this
workshop and for sharing
your ideas!



ChooseHealth
DELAWARE